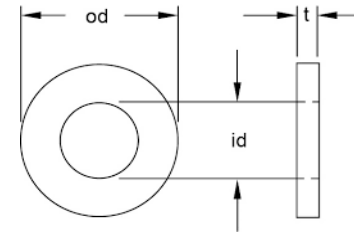


BS 3410 Table 3 Light Gauge Washers



BS 3410 Table 3 Light Gauge Washers								
Diameter	3/16	1/4	5/16	3/8	7/16	1/2	5/8	3/4
o/d	0.44	0.56	0.62	0.75	0.87	1.00	1.25	1.5
t	0.03	0.04	0.04	0.05	0.05	0.06	0.07	0.07

Diameter	7/8	1	1.1/8	1.1/4	1.1/2	1.3/4	2	
o/d	1.52	1.87	2.12	2.37	2.87	3.37	3.62	
t	0.07	0.07	0.09	0.12	0.13	0.13	0.13	

Material	Finish	Diameter
Steel	Self Colour	3/16 - 2
Steel	Zinc (CR3)	3/16 - 1
Stainless Steel	A2 & A4	On Request

INFORMATION AND DRAWINGS PROVIDED ARE FOR REFERENCE ONLY